



# WELCOME

Having benefited greatly myself from the opportunities a university education creates, I wish to congratulate you on taking the next step on your journey to a better future.

It's a major commitment you are making, and it will require some hard work if you are to fulfil your ambitions. But that is to be expected when you're about to change the future direction of your life.

My advice to you is to imagine exactly what you want to achieve and specifically how it will benefit you and those around you. Then regularly remind yourself of these goals and this will help motivate you through the tough times when studying.

At Arden we believe everyone has a right to higher education and we're here to help you to succeed at every step of the way.

So please contact us - we are here to help you overcome any hurdles that are preventing you from taking the next step. Do this today, and I will look forward to congratulating you on your success at your graduation!

Dr Philip Hallam  
Vice-Chancellor & Chief Executive Officer  
Arden University

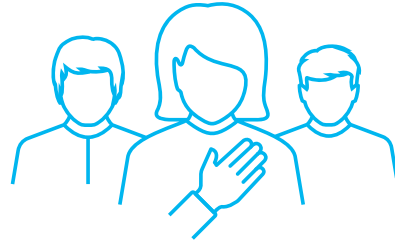


# OUR VALUES



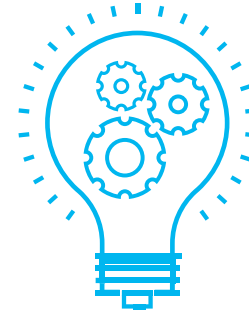
## WE SUPPORT PEOPLE

Together, we create a nurturing environment for our students and employees. We care about people and the positive difference we can make to their lives.



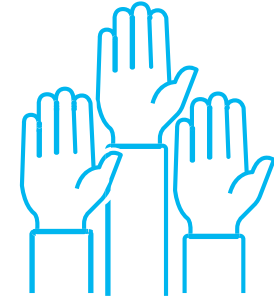
## WE DO THE RIGHT THING

Integrity is at the heart of everything that we do - that means we are completely honest and never compromise on quality.



## WE INNOVATE

We value open-mindedness, dynamism and the ability to think differently. We will always drive for progress, improvement and new ways to do things.



## WE TAKE OWNERSHIP

By each committing to contribute our best, we will achieve our ambitions and together excel in our performance.

## STUDY IN BERLIN

The Arden Study Centre in Berlin is located in the heart of Germany's capital, in the direct vicinity of Potsdamer Platz. The modern university complex includes classrooms and lecture halls, computer labs and a library along with other essential services.

Our central premises in Berlin are close to some of the key players in the corporate world and the main government and public institutions. Our neighbours are several big corporations including Sony, Deutsche Bahn, the Axel Springer Media Group and Daimler, to name but a few.

Studying in the city's international business district will enhance learning and development opportunities with networking for Arden students, faculty and partners. Surrounding the campus, you'll find some fantastic amenities including shopping malls, restaurants serving a variety of international cuisine as well as smaller independent stores.

If you're looking for some peace and quiet to take a stroll, there is plenty of greenery around too. For culture lovers, there are historical places to explore, including museums, also within the vicinity. Germany is the most popular option for international students looking to study in Europe\*. It is recognised for its high-quality education and you can experience this with GISMA, \*According to statistics and data from ICEF monitor.



## WHY BERLIN?

- Excellent employment prospects
- Reasonable cost of living in comparison to many other European countries
- Rich in culture, history and entertainment
- Attractive to international students pursuing an education abroad
- Famous for its many flourishing tech companies and a growing number of start-ups and entrepreneurs

### Campus address:

Located at University of Applied  
Sciences Europe  
Dessauer Str. 3-5  
10963 Berlin  
Germany



## STUDY IN BERLIN

**Berlin is the second largest city in the EU and has a thriving business scene, offering a range of job opportunities to young professionals and graduates.**

**In addition to its rich cultural and political history, it is becoming famous for its flourishing tech companies and growing number of successful entrepreneurs.**

Berlin is located in the north east of Germany, between two rivers:

the Spree and the Havel. Almost a third of the city is made up of green space, with plenty of public parks and gardens available. The city has long-distance rail lines connecting Berlin with other major cities, and two international airports.

Our campus in Berlin is located in the centre, giving easy access to the various destinations and popular areas of the city.

### Estimated expenses per month\*

Rent	€460 - €600
Food	€200 - €300
Books	€20 - €40
others	€80 - €120
Public transportation	€45 - €75
Telephone and internet	€40 - €60
Health insurance	€45 - €55
<b>Total cost of living</b>	<b>€890 - €1250</b>

### Points of interest

**The Brandenburg Gate:** This is one of the most famous landmarks in Germany, and is widely considered to be a symbol of peace and unity for the continent.

**Reichstag:** This historic building was built in 1894 to host the German government, and was fully restored in 1990. The German parliament still meets there today.

**Berlin Wall:** The remains of the Berlin Wall still stand in many places across the city as a reminder of how the capital was once divided and is now united. You can take a tour along where it stood, or visit the memorial and documentation centre.

**Potsdamer Platz:** This is a public square which is now one of the busiest traffic intersections in Europe. It also plays host to many events, such as exhibitions and light shows.

**Tiergarten:** The Berlin Tiergarten is the city's most popular park, as well as being one of the biggest city gardens in Germany. It's perfect for long walks in a natural space, and is also home to Berlin Zoo.

# CONTENTS

## UNDERGRADUATE DEGREES

Business with Human Resource Management BA (Hons)	9-10
Business (Marketing) BA (Hons)	11-12
Business (Tourism) BA (Hons)	13-14
Healthcare Management BA (Hons)	15-16
Human Resource Management and Psychology BA (Hons)	17-18
Accounting and Finance BSc (Hons)	19-20
Criminology and Sociology BA (Hons)	21-22
Psychology and Sociology BA (Hons)	23-24
Criminology and Psychology BA (Hons)	25-26
Social Science BA (Hons)	27-28

## POSTGRADUATE DEGREES

MSc Engineering Management	30-31
MSc Data Analytics and Marketing	32-33
MSc Project Management	34-35
MSc IT Security Management	36-37
MSc Data Analytics and Information Systems Management	38-39
Your learning experience	40-43
Our people	44-46
Testimonials	47-49

# UNDERGRADUATE COURSE





# BA (HONS) BUSINESS (HUMAN RESOURCE MANAGEMENT)



**The course will teach prospective business people how to best manage their staff, motivating them and rewarding them. You will acquire the skills needed to manage the HR side of organisations, benefitting from a curriculum that enforces a range of transferable business skills.**

## Career progression

Upon completion of the course, graduates have a varied range of careers to choose from, with job opportunities in fields such as recruitment and human resources. Future job roles include:

- Human Resources Manager
- Management Consultant
- Recruitment Advisor
- Careers Advisor

## Credentials

Arden has helped 50,000 students succeed over 26 years of providing higher education to students around the world.

96% of graduates are in employment or further study 6 months after graduating\*.

\*2016/17 Destination of Leavers from Higher Education (DLHE).

## Why Berlin?

- Excellent employment prospects
- Reasonable cost of living in comparison to many other European countries
- Attractive to international students pursuing an education abroad
- Rich in culture, history and entertainment

## Who is the programme for?

Anyone wishing to develop a good understanding of the strategic contribution of HRM to an organisation and apply theoretical concepts and practical techniques to the solution of complex problems.

## Key facts

**Campus** Berlin

**Study mode** Full-time

**Next intake** Sep

**Duration** 36 months (full-time)

## Entry requirements

- Two subjects at GCE A level or equivalent, plus passes at grade C or above in three subjects at GCSE level or equivalent or
- Completed a recognised Access Programme or equivalent

- Alternative qualifications will be compared to assess eligibility

\* Correct at time of printing

## Documents

- Complete application form
- Relevant certificates/transcripts
- Copy of passport
- Proof of English for example IELTS (if required)
- Personal statement

For non-standard applications, please visit [gisma.com](http://gisma.com).



# BA (HONS) BUSINESS (HUMAN RESOURCE MANAGEMENT)



## English proficiency requirements

For students whose prior learning was not taught in English.

- IELTS 6.0 or equivalent (no less than 5.5 in any element)

## Modules overview: Year 1 (Level 4)

- Developing personal and management skills
- Understanding the business environment
- Principles of marketing
- Introduction to finance
- People in organisations
- Managing human resources

## Year 2 (Level 5)

- Managing across cultures
- Business processes
- Enterprise and entrepreneurship
- Business analysis
- Planning human resources
- Managing change in organisations

## Year 3 (Level 6)

- Contemporary management issues
- Strategic management
- Managing self and others
- Strategic issues in human resource management
- Research methods and dissertation

Please note that the modules listed are indicative and may be subject to change.



# BA (HONS) BUSINESS (MARKETING)



**The course will equip students with the knowledge and skills specific to marketing planning, strategy and communications that will lead them to become top professionals in marketing whilst also gaining a strong foundation of knowledge within business.**

## Career progression

After completing the course, graduates have a wide variety of careers to choose from. Positions that graduates can take up include:

- Campaign Manager
- Marketing Manager
- Communications Manager

Graduates can also choose to embark on postgraduate study and pursue a master's or MBA degree.

## Credentials

Arden has helped 50,000 students succeed over 26 years of providing higher education to students around the world.

96% of graduates are in employment or further study 6 months after graduating\*.

\*2016/17 Destination of Leavers from Higher Education (DLHE).

## Why Berlin?

- Excellent employment prospects
- Reasonable cost of living in comparison to many other European countries
- Attractive to international students pursuing an education abroad
- Rich in culture, history and entertainment

## Who is the programme for?

The programme will enable you to build a promising professional future in your area of choice, equipping you with the tools you need to thoroughly comprehend the business world and the marketing aspect of organisations.

## Key facts

**Campus** Berlin

**Study mode** Full-time

**Next intake** Sep

**Duration** 36 months (full-time)

## Entry requirements

- Two subjects at GCE A level or equivalent, plus passes at grade C or above in three subjects at GCSE level or equivalent or
- Completed a recognised Access Programme or equivalent

- Alternative qualifications will be compared to assess eligibility

\* Correct at time of printing

## Documents

- Complete application form
- Relevant certificates/transcripts
- Copy of passport
- Proof of English for example IELTS (if required)
- Personal statement
- Copy of photo I.D

For non-standard applications, please visit [gisma.com](http://gisma.com)



# BA (HONS) BUSINESS (MARKETING)



## English proficiency requirements

For students whose prior learning was not taught in English.

- IELTS 6.0 or equivalent (no less than 5.5 in any element)

## Modules overview: Year 1 (Level 4)

- Developing personal and management skills
- Understanding the business environment
- Principles of marketing
- Introduction to finance
- People in organisations
- Marketing communications

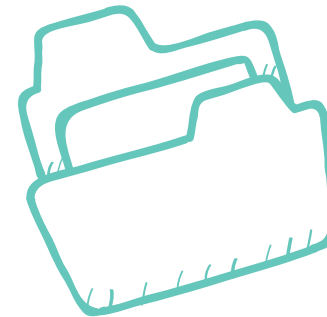
## Year 2 (Level 5)

- Managing across cultures
- Business processes
- Enterprise and entrepreneurship
- Business analysis
- Marketing intelligence
- Marketing planning

## Year 3 (Level 6)

- Contemporary management issues
- Strategic management
- Managing self and others
- International marketing
- Research methods and dissertation

Please note that the modules listed are indicative and may be subject to change



# BA (HONS) BUSINESS (TOURISM)



**The course offers you the foundation you need to manage or start a business in the field of tourism, with a curriculum that enforces a range of transferable, relevant business skills.**

## Career progression

Upon completion of the course, graduates have a wide variety of careers available to them.

Positions that students can expect to take up include:

- Travel Consultant
- Hotel Manager
- Tour Manager
- Travel Agency Manager
- Event Organiser
- Travel Administrator
- Business Development Executive

Graduates can also choose to embark on postgraduate study.

## Credentials

Arden has helped 50,000 students succeed over 26 years of providing higher education to students around the world.

96% of graduates are in employment or further study 6 months after graduating\*.

\*2016/17 Destination of Leavers from Higher Education (DLHE).

## Why Berlin?

- Excellent employment prospects
- Reasonable cost of living in comparison to many other European countries
- Attractive to international students pursuing an education abroad

- Rich in culture, history and entertainment

## Who is the programme for?

This is the perfect course for those who want to introduce their passion for tourism and travel into their careers. The programme will enable you to build a promising professional future in your field of choice.

## Key facts

**Campus** Berlin  
**Study mode** Full-time  
**Next intake** Sep  
**Duration** 36 months (full-time)

## Entry requirements

- Two subjects at GCE A level or equivalent, plus passes at grade C or above in three subjects at GCSE level or equivalent or

- Completed a recognised Access Programme or equivalent

- Alternative qualifications will be compared to assess eligibility

\* Correct at time of printing

## Documents

- Complete application form
- Relevant certificates/transcripts
- Copy of passport
- Proof of English for example IELTS (if required)
- Personal statement

For non-standard applications, please visit [gisma.com](http://gisma.com).



# BA (HONS) BUSINESS (TOURISM)



## English proficiency requirements

For students whose prior learning was not taught in English.

- IELTS 6.0 or equivalent (no less than 5.5 in any element)

## Modules overview: Year 1 (Level 4)

- Developing personal and management skills
- Understanding the business environment
- Principles of marketing
- Introduction to finance
- People in organisations
- Understanding the tourism environment

## Year 2 (Level 5)

- Managing across cultures
- Business processes
- Enterprise and entrepreneurship
- Business analysis
- Contemporary issues in tourism management
- Sustainable tourism management

## Year 3 (Level 6)

- Contemporary management issues
- Strategic management
- Managing self and others
- International destination management
- Research methods and dissertation

Please note that the modules listed are indicative and may be subject to change



# BA (HONS) HEALTHCARE MANAGEMENT



**This course is ideal for anyone interested in becoming a confident healthcare professional, covering the three main themes of Professional Environment and Practice, Operations and Quality Management and Leadership and Management.**

## Career progression

Having completed this degree, graduates will have a wide variety of options for roles they can succeed in. These include, but are not limited to:

- Care Manager
- Health Service Manager
- Charity Officer
- Health Promotion Specialist

## Credentials

Arden has helped 50,000 students succeed over 26 years of providing higher education to students around the world.

96% of graduates are in employment or further study 6 months after graduating\*.

\*2016/17 Destination of Leavers from Higher Education (DLHE).

## Why Berlin?

- Excellent employment prospects
- Reasonable cost of living in comparison to many other European countries
- Attractive to international students pursuing an education abroad
- Rich in culture, history and entertainment

## Who is the programme for?

This programme is for anyone looking to gain knowledge and tools that could lead to a range of successful careers such as a professional practitioner, manager, or leader in Health and Social Care.

## Key facts

**Campus** Berlin

**Study mode** Full-time

**Next intake** Sep

**Duration** 36 months (full-time)

## Entry requirements

- Two subjects at GCE A level or equivalent, plus passes at grade C or above in three subjects at GCSE level or equivalent or
- Completed a recognised Access Programme or equivalent

- Alternative qualifications will be compared to assess eligibility

\* Correct at time of printing

## Documents

- Complete application form
- Relevant certificates/transcripts
- Copy of passport
- Proof of English for example IELTS (if required)
- Personal statement

For non-standard applications, please visit [gisma.com](http://gisma.com).



# BA (HONS) HEALTHCARE MANAGEMENT



## English proficiency requirements

For students whose prior learning was not taught in English.

- IELTS 6.0 or equivalent (no less than 5.5 in any element)

## Modules overview: Year 1 (Level 4)

- Skills for learning in care
- Social, political and ethical issues in international healthcare
- Communication and collaboration in managing the professional environment
- Meeting the needs of service users
- Planning and managing resources
- Fostering dignity and respect

## Year 2 (Level 5)

- Financial control and budgeting
- Performance improvement and management in health and social care
- Public health
- Health promotion
- Inter-agency working in care delivery
- Leading teams in health and social care

## Year 3 (Level 6)

- Quality management in a care Setting
- Business analysis and planning
- Global health and sustainability
- Project management and risk
- Research methods and final project

Please note that the modules listed are indicative and may be subject to change.







**Are you interested in the influence of psychology on business? If you want to learn how to get the best out of people then what better subject to learn alongside HR than psychology.**

## Career progression

Upon completion of the course, graduates have a varied range of management and professional positions to choose from, with job opportunities in fields that value people-management skills such as recruitment and human resources. Future job roles include:

- Human Resources Manager
- Recruitment Consultant
- Careers Advisor

## Credentials

Arden has helped 50,000 students succeed over 26 years of providing higher education to students around the world.

96% of graduates are in employment or further study 6 months after graduating\*.

\*2016/17 Destination of Leavers from Higher Education (DLHE).

## Why Berlin?

- Excellent employment prospects
- Reasonable cost of living in comparison to many other European countries
- Attractive to international students pursuing an education abroad
- Rich in culture, history and entertainment

## Who is the programme for?

This programme is for those interested in the influence of psychology on business and want to learn how to get the best out of people in an organisational setting.

## Key facts

**Campus** Berlin

**Study mode** Full-time

**Next intake** Sep

**Duration** 36 months (full-time)

## Entry requirements

- Two subjects at GCE A level or equivalent, plus passes at grade C or above in three subjects at GCSE level or equivalent or
- Completed a recognised Access Programme or equivalent

- Alternative qualifications will be compared to assess eligibility

\* Correct at time of printing

## Documents

- Complete application form
- Relevant certificates/transcripts
- Copy of passport
- Proof of English for example IELTS (if required)
- Personal statement

For non-standard applications, please visit [gisma.com](http://gisma.com).



# BA (HONS) HUMAN RESOURCE MANAGEMENT & PSYCHOLOGY



## English proficiency requirements

For students whose prior learning was not taught in English.

- IELTS 6.0 or equivalent (no less than 5.5 in any element)

## Year 1 (Level 4)

- Skills for Interdisciplinary Study
- English Legal System
- Law of Contract
- Understanding the business environment
- Introduction to social and developmental psychology
- Introduction to biological and cognitive psychology

## Year 2 (Level 5)

- Research and ethics in action
- Personality and intelligence
- Planning human resource
- Managing across cultures
- Managing change in Organisations
- Social Psychology

Please note that the modules listed are indicative and may be subject to change.

## Year 3 (Level 6)

- Occupational psychology
- Employment law
- Strategic Issues in human resource management
- Cross-cultural psychology
- Research planning and project



# BSc (HONS) ACCOUNTING AND FINANCE



**This course will provide you with essential financial and management accounting skills, as well as a strong, broad and practical knowledge of the world of finance.**

## Career progression

Upon completion of this undergraduate qualification, you will be prepared to enter a variety of business, financial and accounting roles. Candidates equipped with a solid understanding of business management as well as financial knowledge and accounting skills are highly valued to many employers. Some roles you might consider are:

- Account
- Finance Analyst
- Financial Manager
- Investment Banking
- Broker
- Tax Advisor

Graduates can also choose to embark on postgraduate study.

## Credentials

Arden has helped 50,000 students succeed over 26 years of providing higher education to students around the world.

96% of graduates are in employment or further study 6 months after graduating\*.

\*2016/17 Destination of Leavers from Higher Education (DLHE)

## Why Berlin?

- Excellent employment prospects
- Reasonable cost of living in comparison to many other European countries
- Attractive to international students pursuing an education abroad
- Rich in culture, history and entertainment

## Who is the programme for?

This programme is for those seeking a career in accounting and finance. The course will provide you with key skills in financial reporting and management accounting, and knowing how to apply these to inform good financial decision making in real business situations.

## Key facts

**Campus** Berlin

**Study mode** Full-time

**Next intake** Sep

**Duration** 36 months (full-time)

## Entry requirements

- Two subjects at GCE A level or equivalent, plus passes at grade C or above in Maths and two other subjects at GCSE level or equivalent
- Completed a recognised Access Programme or equivalent
- Alternative qualifications will be compared to assess eligibility

\* Correct at time of printing

\*\*To become fully qualified as an Accountant within Germany, you may be required to take an additional German course and examination which is approved by local authorities and accredited by relevant German institutions and associations.

BLEND  
LEARNING

# BSc (HONS) ACCOUNTING AND FINANCE



## Documents

- Complete application form
- Relevant certificates/transcripts
- Copy of passport
- Proof of English for example IELTS (if required)
- Personal statement

For non-standard applications, please visit [gisma.com](http://gisma.com).

## English proficiency options

For students whose prior learning was not taught in English.

- IELTS 6.0 or equivalent (no less than 5.5 in any element)

## Modules overview: Year 1 (Level 4)

- Financial accounting
- Cost accounting
- Developing personal and management skills
- Business maths
- Understanding the business environment
- Managing information systems

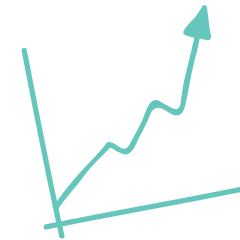
## Year 2 (Level 5)

- Business law
- British tax system
- Accounting and audit framework
- Financial reporting
- Management accounting
- Decision making

## Year 3 (Level 6)

- Audit
- Financial management
- Ethics
- Professional, statutory and current accounting issues
- Research methods and dissertation

Please note that the modules listed are indicative and may be subject to change.



# BA (HONS) CRIMINOLOGY AND SOCIOLOGY



**With this course, you can expect to grasp a solid knowledge of social values, behaviours and change, as well of the function and place of crime within modern societies.**

## Career progression

Upon completion of the course, graduates have a wide variety of career options they can explore.

These include, but are not limited to:

- Social work
- Counselling
- Crime prevention
- Community work
- Court services
- Mental health
- Central and local government

Other areas where graduates can find opportunities include human resources, marketing, research and advertising.

## Credentials

Arden has helped 50,000 students succeed over 26 years of providing higher education to students around the world.

96% of graduates are in employment or further study 6 months after graduating\*.

\*2016/17 Destination of Leavers from Higher Education (DLHE)

## Why Berlin?

- Excellent employment prospects
- Reasonable cost of living in comparison to many other European countries
- Attractive to international students pursuing an education abroad
- Rich in culture, history and entertainment

## Who is the programme for?

This course is perfect for those who aspire to gain an in-depth personal or professional knowledge in two leading fields in the social sciences, as well as grasp the interdisciplinary, critical comprehension of crime and social issues in the contemporary world.

## Key facts

**Campus** Berlin  
**Study mode** Full-time  
**Next intake** Sep  
**Duration** 3 years

## Entry requirements

- Two subjects at GCE A level or equivalent, plus passes at two other subjects at GCSE level or equivalent or
- Completed a recognised Access Programme or equivalent

- Alternative qualifications will be compared to assess eligibility

\* Correct at time of printing

## Documents

- Complete application form
- Certified copies of relevant certificates/transcripts
- Copy of passport
- Proof of English for example IELTS (if required)
- Personal statement

For non-standard applications, please visit [gisma.com](http://gisma.com).

## English proficiency requirements

For students whose prior learning was not taught in English.

- IELTS 6.0 or equivalent (no less than 5.5 in any element)

BLEND  
LEARNING

# BA (HONS) CRIMINOLOGY AND SOCIOLOGY



## Modules overview:

### Year 1 (Level 4)

- Skills for interdisciplinary study
- Crime and society
- Criminal justice system
- Introduction to sociology
- Medicalisation of the self
- Inequalities in the modern world

### Year 2 (Level 5)

- Research and ethics in action
- Contemporary debates in criminology
- Environmental criminology
- Abnormality and the deviant other
- Policing and police powers
- Protests, mass movements and rebellion

### Year 3 (Level 6)

- Cybercrime
- Youth justice
- Consumer society and the commodification of beings
- Insecurity and precariousness in the globalised world
- Research methods and project

Please note that the modules listed are indicative and may be subject to change.



# BA (HONS) PSYCHOLOGY AND SOCIOLOGY



**The course will introduce you to social, developmental, cognitive and biological elements. You will discover case studies within this field that have shaped the past as well as contemporary thinking.**

## Career progression

Having completed this degree, graduates will have a wide variety of career options they can explore. These include, but are not limited to:

- Teaching
- Counselling
- International aid/development work
- Journalism
- Politics
- Community, youth or social work



Graduates can also choose to embark on postgraduate study.

## Credentials

Arden has helped 50,000 students succeed over 26 years of providing higher education to students around the world.

96% of graduates are in employment or further study 6 months after graduating\*.

\*2016/17 Destination of Leavers from Higher Education (DLHE).

## Why Berlin?

- Excellent employment prospects
- Reasonable cost of living in comparison to many other European countries
- Attractive to international students pursuing an education abroad
- Rich in culture, history and entertainment

## Who is the programme for?

This is the perfect course for you if the human mind and behaviour fascinate you. Under psychology, this programme will enable you to look at individuals themselves, but under sociology, you will determine how wider societal factors can impact people.

## Key facts

**Campus** Berlin  
**Study mode** Full-time  
**Next intake** Sep  
**Duration** 3 years

## Entry requirements

- Two subjects at GCE A level or equivalent, plus passes at grade C or above in three subjects at GCSE level or equivalent or
- Completed a recognised Access Programme or equivalent

- Alternative qualifications will be compared to assess eligibility

\* Correct at time of printing

## Documents

- Complete application form
- Relevant certificates/transcripts
- Copy of passport
- Proof of English for example IELTS (if required)
- Personal statement

For non-standard applications, please visit [gisma.com](http://gisma.com).

## English proficiency options

For students whose prior learning was not taught in English.

- IELTS 6.0 or equivalent (no less than 5.5 in any element)

# BA (HONS) PSYCHOLOGY AND SOCIOLOGY



## Modules overview:

### Year 1 (Level 4)

- Skills for interdisciplinary study
- Introduction to social and developmental psychology
- Introduction to biological and cognitive psychology
- Introduction to sociology
- Medicalisation of the self
- Key studies in psychology

### Year 2 (Level 5)

- Research and ethics in action
- Social psychology
- Personality and intelligence
- Abnormality and the deviant other
- Cyber communities and social networks
- Protests, mass movements and rebellion

### Year 3 (Level 6)

- Contemporary developmental psychology
- Cross-cultural psychology
- Consumer society and the commodification of beings
- Insecurity and precariousness in the globalised world
- Research planning and project

Please note that the modules listed are indicative and may be subject to change





# BA (HONS) CRIMINOLOGY AND PSYCHOLOGY



**The course is ideal for anyone interested in understanding theories about crime and explanatory factors and how society responds to crime and deviance.**

## Career progression

Upon completion of the course, graduates have a wide variety of career options they can explore. These include, but are not limited to:

- Human resources
- Teaching
- Government
- Prison system
- Police force
- Research

Graduates can also choose to embark on postgraduate study.

BLEND  
ED  
LEARNING

## Credentials

Arden has helped 50,000 students succeed over 26 years of providing higher education to students around the world.

96% of graduates are in employment or further study 6 months after graduating\*.

\*2016/17 Destination of Leavers from Higher Education (DLHE)

## Why Berlin?

- Excellent employment prospects
- Reasonable cost of living in comparison to many other European countries
- Attractive to international students pursuing an education abroad
- Rich in culture, history and entertainment

## Who is the programme for?

This is the perfect course for anyone looking to understand how the Criminal Justice System (CJS) works in England and Wales and gain deep knowledge on the law of the land. You will analyse these legal processes including the implications of any discrimination which can exist in the CJS.

## Key facts

**Campus** Berlin  
**Study mode** Full-time  
**Next intake** Sep  
**Duration** 3 years

## Entry requirements

- Two subjects at GCE A level or equivalent, plus passes at two other subjects at GCSE level or equivalent or
- Completed a recognised Access Programme or equivalent

- Alternative qualifications will be compared to assess eligibility

\* Correct at time of printing

## Documents

- Complete application form
- Relevant certificates/transcripts
- Copy of passport
- Proof of English for example IELTS (if required)
- Personal statement

For non-standard applications, please visit [gisma.com](http://gisma.com).

## English proficiency requirements

For students whose prior learning was not taught in English.

- IELTS 6.0 or equivalent (no less than 5.5 in any element)

# BA (HONS) CRIMINOLOGY AND PSYCHOLOGY



## Modules overview:

### Year 1 (Level 4)

- Skills for interdisciplinary study
- Introduction to social and developmental psychology
- Introduction to biological and cognitive psychology
- Crime and society
- Criminal Justice System
- Key studies in psychology

### Year 2 (Level 5)

- Research and ethics in action
- Personality and intelligence
- Social psychology
- Contemporary debates in criminology
- Environmental criminology
- Policing and police Powers

### Year 3 (Level 6)

- Contemporary developmental psychology
- Cross-cultural psychology
- Cybercrime
- Youth justice
- Research planning and project

Please note that the modules listed are indicative and may be subject to change.



# BA (HONS) SOCIAL SCIENCE



**This course allows you to discover the history of criminal behaviour and learn about new waves of crimes such as terrorism, cybercrime and more.**

## Career progression

Having completed this degree, graduates will have a wide variety of career options to explore. These include, but are not limited to:

- Politics
- Journalism
- Teaching
- Social work
- Criminal justice system and the police
- Planning and environmental management
- Business
- Public relations
- Media and market research
- Advertising and marketing

Graduates can also choose to embark on postgraduate study.

## Credentials

Arden has helped 50,000 students succeed over 26 years of providing higher education to students around the world.

96% of graduates are in employment or further study 6 months after graduating\*.

\*2016/17 Destination of Leavers from Higher Education (DLHE)

## Why Berlin?

- Excellent employment prospects
- Reasonable cost of living in comparison to many other European countries
- Attractive to international students pursuing an education abroad
- Rich in culture, history and entertainment

## Who is the programme for?

If you find yourself always questioning why and how certain things happen in society, this course will help you delve deeper into the core of each issue. You will assess current debates within the field and decide how they contribute to the wider arguments.

## Key facts

**Campus** Berlin  
**Study mode** Full-time  
**Next intake** Sep  
**Duration** 3 years

## Entry requirements

- Two subjects at GCE A level or equivalent, plus passes at two other subjects at GCSE level or equivalent or
- Completed a recognised Access Programme or equivalent

- Alternative qualifications will be compared to assess eligibility

\* Correct at time of printing

## Documents

- Complete application form
- Relevant certificates/transcripts
- Copy of passport
- Proof of English for example IELTS (if required)
- Personal statement

For non-standard applications, please visit [gisma.com](http://gisma.com).

## English proficiency requirements

For students whose prior learning was not taught in English.

- IELTS 6.0 or equivalent (no less than 5.5 in any element)

BLEND  
LEARNING

# BA (HONS) SOCIAL SCIENCE



## Modules overview:

### Year 1 (Level 4)

- Skills for interdisciplinary study
- Law and ethics
- Introduction to social and developmental psychology
- Introduction to sociology
- Medicalisation of the self
- Crime and society

### Year 2 (Level 5)

- Research and ethics in action
- Civil liberties and human rights
- Personality and intelligence
- Social psychology
- Contemporary debates in criminology
- Cyber communities and social networks

### Year 3 (Level 6)

- Research planning and project
- Cybercrime
- Crime prevention
- Cross-cultural psychology
- Consumer society and the commodification of beings

Please note that the modules listed are indicative and may be subject to change.



# POSTGRADUATE COURSES



# MSc ENGINEERING MANAGEMENT



**Take your career to the next level with this master's degree, giving you the insights and skills you need to step up to a managerial level in the engineering field. You will learn how to successfully manage day to day projects as well as long-term, complex initiatives, including quality assurance, sustainability concepts along with supply chain and operations management.**

## Career progression

Alongside your MSc Engineering Management degree, you'll get a CMI Level 6 qualification in Strategic Management and Leadership – industry-recognised, and a fast-track route toward Chartered Manager status. Once you graduate, you can apply for a wide variety of roles in engineering management, such as:

- Operations Manager
- Director
- Production Manager
- Production Team Leader
- Supply Chain Manager

## Credentials

Arden has helped 50,000 students succeed over 26 years of providing higher education to students around the world. In 2015, Arden's Student Survey found that 79% of students saw their career improve as a direct result of their studies.

## Why Berlin?

- Excellent employment prospects
- Reasonable cost of living in comparison to many other European countries
- Attractive to international students pursuing an education abroad

- Rich in culture, history and entertainment

## Who is the programme for?

This programme is ideal for ambitious professionals currently working within the engineering sector who want to progress to management and leadership positions.

## Key facts

**Campus** Berlin

**Study mode** Part-time / Full-time

**Next intake** Feb/ Apr/ Oct

**Duration** 24 months (part-time) / 12 months (full-time)

## Entry requirements

- A minimum 2:2 UK honours degree or equivalent
- For non-standard entry requirements,
- Alternative qualifications will be compared to assess eligibility

\* Correct at time of printing

## Documents

- Complete application form
- Relevant certificates/transcripts
- Copy of passport
- Personal statement

## English proficiency requirements

- An English language level equivalent to IELTS 6.5 or above with a minimum of 6.0 in each component
- English native speaker / degree obtained in English

## Experience

Work experience is not an obligatory requirement, and students from all academic backgrounds are welcome to apply. For more information on this programme and the entry requirements, please get in touch with one of our advisors.

FULL-TIME/  
PART-TIME

# MSc ENGINEERING MANAGEMENT



## Core modules:

### Project Management Techniques

- Understand the components of different activities
- Learn how to monitor and control projects
- Understand how to get the best performance from project team members

### Sustainability in Theory and Practice

- Explore environmental and ethical perspectives on sustainability
- Understand how sustainability can support business growth
- Use case studies to understand the application of sustainability

### Operations and Supply Chain Management

- Understand the importance and impact of supply chain management
- Learn how to ensure that transformation of inputs into outputs meet performance objectives

### Risk Management and Innovation

- Understand how to apply risk management and innovation theory
- Evaluate the relationship between risk and innovation
- Understand the implications of risk on organisational culture and HR

### Quality Management

- Understand the core principles of quality management

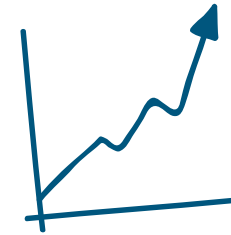
- Learn the tools and systems that can be used
- Apply these theories to specific business needs and objectives

### Data Handling and Decision Making

- Analyse the data environment of a workplace
- Interpret and understand data to inform decisions
- Apply data analysis to a real business scenario

### Research Project

- Explore a related topic of your choice
- Develop your critical abilities



FULL-TIME/  
PART-TIME



**Arden University have aligned their master's in Data Analytics and Marketing with the CIM 'Diploma in Professional Marketing'. This course is accredited by the Chartered Institute of Marketing (CIM), a leading international organisation for professionals in the marketing sector. This means that on graduation, you will be able to add even more value to your master's qualification by submitting your assessments to the CIM to gain this qualification for relatively little extra time and cost.**

## Career progression

This course will give you the skills for a range of marketing and management roles, such as:

- Marketing Director
- Head of Sales and Marketing
- Senior Marketing Analyst

- Senior Product Development Manager
- Senior Brand Manager

## Credentials

Arden has helped 50,000 students succeed over 26 years of providing higher education to students around the world. In 2015, its Student Survey found that 79% of Arden's students saw their career improve as a direct result of their studies at the University.

## Why Berlin?

- EU's second largest city
- Excellent employment prospects
- Reasonable cost of living in comparison to many other European countries
- Attractive to international students pursuing an education abroad
- Rich in culture, history and entertainment

- Famous for its many flourishing tech companies and a growing number of start-ups and entrepreneurs

## Who is the programme for?

If you want to gain an advanced understanding of marketing management and build a successful career in this sector you will benefit from this course.

## Key facts

**Campus** Berlin

**Study mode** Part-time / Full-time

**Next intake** Feb/ Apr/ Oct

**Duration** 24 months (part-time) / 12 months (full-time)

## Entry requirements

- A minimum 2:2 UK honours degree or equivalent
- For non-standard entry requirements, please contact us

- Alternative qualifications will be compared to assess eligibility

\* Correct at time of printing

## Documents

- Complete application form
- Relevant certificates/transcripts
- Copy of passport
- Personal statement

## English proficiency requirements

- An English language level equivalent to IELTS 6.5 or above with a minimum of 6.0 in each component
- English native speaker / degree obtained in English

## Experience

Work experience is not an obligatory requirement, and students from all academic backgrounds are welcome to apply. For more information on this programme and the entry requirements, please get in touch with one of our advisors.



# MSc DATA ANALYTICS AND MARKETING (CIM)



## Core modules:

### Strategic Marketing (CIM)

- Strategy in Marketing and the importance of Competitive Advantage
- Understanding the importance of sustainable growth

### International Marketing

- International marketing strategies to achieve competitive advantage
- Developing strategic plans for an organisation
- International marketing theories

### Mastering Metrics

- Marketing measurement techniques within an organisation

### Digital Strategy

- Understanding how organisations use digital media to market their products or services
- Tools for assessing the impact of the digital environment

### Data Handling and Decision Making

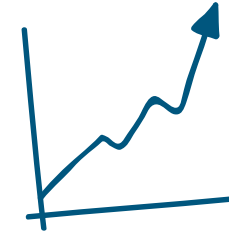
- Understanding the importance of how to handle and use data
- Analysing the data environment in an organisation
- Case study driven task

### Data Visualisation and Interpretation

- Interpretation and analysis of data to make it universally engaging and understood.

### Research Project

- Investigation and critical evaluation of a business issue of your choice



# MSc PROJECT MANAGEMENT



**The course covers the essential points of managing successful projects, including how to use data during the planning process. After graduating, you will be able to deliver global projects using Gold Standard techniques. It is also accredited by the Association for Project Management (APM).**

## Career progression

Project managers are an important part of every business and are highly valuable due to their many skills. In addition to self-employment and/or consultancy, you will be able to apply for the following roles:

- Project Director
- Project Executive
- Technical Project Manager
- Technical Project Lead
- Business Project Lead Programme

## Credentials

Arden has helped 50,000 students succeed over 26 years of providing higher education to students around the world. In 2015, its Student Survey found that 79% of Arden's students saw their career improve as a direct result of their studies at the University.

## Why Berlin?

- Excellent employment prospects
- Reasonable cost of living in comparison to many other European countries
- Attractive to international students pursuing an education abroad
- Rich in culture, history and entertainment
- Famous for its many flourishing tech companies and a growing number of start-ups and entrepreneurs

## Who is the programme for?

Are you leading projects in your current role, or are you someone who would like to begin a career that would involve project management? This course is perfect to build the skills and knowledge to drive your career forward, or to start a new role in this field.

## Key facts

**Campus** Berlin

**Study mode** Part-time / Full-time

**Next intake:** Feb / Apr/ Oct

**Duration** 24 months (part-time) / 12 months (full-time)

## Entry requirements

- A minimum 2:2 UK honours degree or equivalent
- For non-standard entry requirements, please contact us
- Alternative qualifications will be compared to assess eligibility

\* Correct at time of printing

## Documents

- Complete application form
- Relevant certificates/transcripts
- Copy of passport
- Personal statement

## English proficiency requirements

- An English language level equivalent to IELTS 6.5 or above with a minimum of 6.0 in each component
- English native speaker / degree obtained in English

## Experience

Work experience is not an obligatory requirement, and students from all academic backgrounds are welcome to apply. For more information on this programme and the entry requirements, please get in touch with one of our advisors.



# MSc PROJECT MANAGEMENT



## Core modules:

### Project Management Techniques

- Identifying different types of project management
- Understanding solid methods to monitor and control projects from start to finish
- Understanding financial budgeting, resolving complex issues and team work

### Management of Projects

- Understanding effective management and leadership
- Exploring models and methods that will help you to take charge of projects
- Investment decision making

### Project Analytics

- Strategic decision making
- Analysing project performance

### Data Handling and Decision Making

- Understanding the importance of how to handle and use data
- Analysing the data environment in an organisation
- Case study driven task

### Sustainability in Theory and Practice

- Exploring the challenges of sustainability
- Evaluation of business sustainability problems and solutions

### Quality Management

- Understanding the key theories and practice of delivering a quality product
- Exploring the core principles of quality management

### Research Project

- Investigation and critical evaluation of a business issue of your choice



# MSc IT SECURITY MANAGEMENT



**You will learn how to create and manage IT security processes and plans within businesses, taking into account the rapid changes within the IT landscape. You will learn through a variety of assessed projects and work, with helpful feedback from your tutor to ensure that you are on a path of continual improvement and can apply your new skills to real situations.**

## Career progression

After completing this course, you can go into areas of business such as consultancy, government organisations, research, and professional firms. Potential roles include:

- Security Consultant
- Information Security Analyst
- Technology Analyst
- Systems and Networks Security Engineer
- IT Security and Governance Officer

- Government Technology Officer
- Infrastructure Analyst
- Quality and Security Analyst

## Credentials

Arden has helped 50,000 students succeed over 26 years of providing higher education to students around the world. In 2015, its Student Survey found that 79% of Arden's students saw their career improve as a direct result of their studies at the University.

## Why Berlin?

- Excellent employment prospects
- Reasonable cost of living in comparison to many other European countries
- Rich in culture, history and entertainment
- Attractive to international students pursuing an education abroad

- Famous for its many flourishing tech companies and a growing number of start-ups and entrepreneurs

## Who is the programme for?

If you are currently working in IT security or if you want to move into that sector, this course will give you the skills needed to meet the challenges of the evolving field of technology and its rapid development within the context of security risks.

## Key facts

**Campus** Berlin

**Study mode** Part-time / Full-time

**Next intake:** Feb/ Apr/ Oct

**Duration** 24 months (part-time) / 12 months (full-time)

## Entry requirements

- A minimum 2:2 UK honours degree or equivalent
- For non-standard entry requirements, please contact us

- Alternative qualifications will be compared to assess eligibility

## Documents

- Complete application form
- Relevant certificates/transcripts
- Copy of passport
- Personal statement

## English proficiency requirements

- An English language level equivalent to IELTS 6.5 or above with a minimum of 6.0 in each component
- English native speaker / degree obtained in English

## Experience

Work experience is not an obligatory requirement, and students from all academic backgrounds are welcome to apply. For more information on this programme and the entry requirements, please get in touch with one of our advisors.

FULL-TIME/  
PART-TIME

# MSc IT SECURITY MANAGEMENT



## Core modules:

### Technology and Trend Monitoring

- Evaluating emerging IT technologies and investigating their implementation within current business practice

### Information Security Strategy Development

- Understanding the main technologies used for information security
- Evaluating and implementing established standards and methods for strategic decision making

### Risk Management

- Identify and mitigate risks in an IT environment through different methods

- Evaluating risks in current IT practice within an organisation

### IT Security Management

- Understanding the techniques required to manage the security of IT systems in organisations of all sizes
- Developing and implementing a security recovery plan

### Information Systems Governance

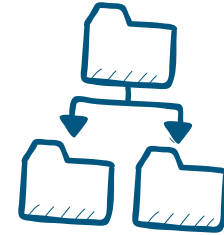
- Evaluating how governance can mitigate risk and maximise the benefits associated with systems and software
- Auditing current governance approaches

### Cloud Systems and Applications

- Exploring the development and potentially disruptive effect of cloud computing systems
- Evaluating the merits and risks of cloud computing systems implementation in the workplace

### Research Project

- Investigation and critical evaluation of a business issue of your choice



FULL-TIME/  
PART-TIME



**The programme will provide you with expert knowledge of data design, technology and trend monitoring, and other IT activities within an organisation. Combine data analytics with IT to navigate the technology industry with ease. Apply knowledge to 21st century relevant developments such as 'Big Data' and the 'Internet of Things.'**

## Career progression

After studying for this MSc Data Analytics and Information Systems Management programme you will be well equipped to enter a strategic role in the IT sector, or to take your data manipulation skills to a non-IT specialist position. The type of job roles you might explore include:

- Information Systems Manager
- Functional Manager
- Service Delivery manager
- Systems Manager

- Senior Data Analyst
- Statistician
- IT Risk
- Business Intelligence Specialist

## Credentials

Arden has helped 50,000 students succeed over 26 years of providing higher education to students around the world. In 2015, Arden's Student Survey found that 79% of students saw their career improve as a direct result of their studies.

## Why Berlin?

- Excellent employment prospects
- Reasonable cost of living in comparison to many other European countries
- Attractive to international students pursuing an education abroad
- Rich in culture, history and entertainment

## Who is the programme for?

This programme is ideal for aspiring IT managers who want to launch a career in the industry. Confidently utilise opportunities that big data offers for business success.

## Key facts

**Campus** Berlin

**Study mode** Part-time / Full-time

**Next intake** Feb/ Apr/ Oct

**Duration** 24 months (part-time) / 12 months (full-time)

## Entry requirements

- A minimum 2:2 UK honours degree or equivalent
- For non-standard entry requirements, please contact us
- Alternative qualifications will be compared to assess eligibility

## Documents

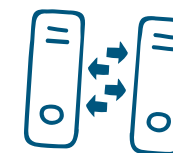
- Complete application form
- Relevant certificates/ transcripts
- Copy of passport
- Personal statement

## English proficiency requirements

- An English language level equivalent to IELTS 6.5 or above with a minimum of 6.0 in each component
- English native speaker / degree obtained in English

## Experience

Work experience is not an obligatory requirement, and students from all academic backgrounds are welcome to apply. For more information on this programme and the entry requirements, please get in touch with one of our advisors.





## Core modules:

### Data Design

You will learn:

- How to approach data analytics by understanding the intended outcomes
- How to select the most appropriate data collection method
- Revising instruments and systems and designing deployment approaches
- Achieve valuable outcomes for your business

### Data Handling and Decision Making

You will learn:

- How to handle data and what you can do with it
- How to make knowledge-driven decisions

- Evaluate the role of data handling and decision making within specific contexts

### Data Visualisation and Interpretation

You will learn:

- Techniques to read through data and come up with solutions
- Manipulating data and learning to understand it
- How to present data in a manner which is universally understood

### IS and Business Strategy Alignment

You will learn:

- Aligning information systems with business strategy
- Evaluate the implications of project and portfolio management on the fulfilment of IT projects in

the workplace

- Evaluate opportunities for adoption of emerging technologies in IT practice

### Technology and Trend Monitoring

You will learn:

- Technology and Trend Monitoring
- Critically understand the evolution of technological trends
- Systematic monitoring of technology
- Investigate latest trends developments to understand their application within current business practice

### Project and Portfolio Management

- Centralised management of processes and technologies

- Achieve strategic objectives by managing projects
- Evaluation of project management approaches and monitoring tools

### Research Project

- Analyse complex problems and requirements
- Systematically synthesise and evaluate a range of potential solutions
- Developing research skills on specific projects



A group of students in a classroom setting, with several birds flying in the background. The students are looking at laptops and appear to be engaged in a learning activity. The background is a light blue color with several dark blue bird silhouettes flying in various directions.

# YOUR LEARNING EXPERIENCE



## FLEXIBILITY

Arden has two core delivery methods that offer students flexibility.

### Distance Learning

All our programmes at Arden come with the study flexibility you need to fit your Undergraduate or Postgraduate degree around you and your life - our Distance Learning approach allows you to study 100% online, at a time and place to suit you.

### Blended Learning

This combines innovative online learning with traditional face-to-face classes, providing you with the support to fit education into your busy life.

You will receive dedicated tutor support on campus from day one. Your dedicated programme tutor will guide you through face-to-face and online learning. You will receive regular academic support from tutors at us in Berlin to make sure you achieve the best learning outcomes.

# 24/7

Study any time of day

# 90%

of students work alongside their study

LEARN  
WHENEVER  
AND  
WHEREVER

## CAREER FOCUS

All our courses have been designed with your career impact in mind. Many modules offer scenario-based study and built-in professional development that will give you a suite of transferable skills that can be applied to a range of industries and roles.

We also have a content-rich careers portal to give you a wealth of general skills and knowledge that can help you get the most out of your career.



Discover higher education that's

**BUILT  
AROUND  
← YOU**



# MODERN LEARNING

There has been a lot of research into what learners need to succeed in their studies, and this is the foundation on which we have built our curriculum and courses.

Alongside traditional texts, we use podcasts, webinars (online seminars) and interactive knowledge-checks to keep you engaged, focused and motivated.

To make sure our learners can access all these up-to-date learning tools, whenever they need to, we've put them all in one, online place – ilearn.

## Introducing ilearn – Your Virtual Classroom

# ILEARN

is like an online classroom with your library, diary and lecture theatre all rolled into one. It contains:



## ALL

of your modules including online induction, core study materials and schedules



## ACCESS

to our online library with thousands of e-books and e-journals



## FORUMS

to interact with fellow students and tutors



## CAREERS

portal with access to rich and interactive content

Many of our modules can be easily downloaded so you can add comments, highlight key points and write notes even in places where internet connection is sparse.

## OUR PEOPLE

At Arden we want every student, no matter what their background or situation, to be able to enjoy their studies and to achieve their goals. From application to graduation, you will have a network of people there to support you every step of the way.



### Arden and GISMA Business School: How our partnership works

Arden University are proud to have partnered with GISMA business School. As experts in Distance Learning, our role is to help students enrol on to GISMA Business School to benefit from blended learning with a quality online learning aspect, in a great location like Berlin, Germany. This means we support you all the way through the application process, from your initial enquiry to enrolling on the course with GISMA Business School.

Once enrolled, you will become a fully-fledged Arden University student who will receive support from GISMA Business School with aspects of your stay in Germany, whilst Arden University supports with learning, course materials and tutor interaction.

### Admissions

When you first enquire about studying with us, you'll speak to one of our friendly admissions advisors.

They'll help you consider the options available to you and how studying with us can fit around your life.

If you want to find out more about Arden, our courses, how they are taught, entry requirements, or fees and funding, then this team will be able to help.

Our dedicated team are here to help you choose the right course for you and to guide you through the application process – feel free to give them a call and they'd be happy to help!

Arden University admissions team works in close collaboration with GISMA Business School admissions team to ensure a smooth, consistent and high quality application process. Arden University are the awarding body and responsible for delivery of teaching and assessment along with student support. Arden University works closely with GISMA Business School to deliver these programmes in Germany in order to enhance its global offering.



“Whether you are considering studying with us, want to know which courses you are eligible for or how the student loan process works, or even just want to find out more about Arden, we are here to help. We will support you through the entire application process, helping you complete your application and guiding you through the enrolment and fee payment stage.”

# OUR PEOPLE

## Academics

The academic team is an essential part of any university course. At Arden we have a great team to guide you through your study.

You will get to know them during your course, either through the online live seminars and tutorials on iLearn, or through face-to-face learning at our study centre in Germany. If you have a question outside of class or want feedback on an assignment, your tutor is available to contact directly via email, phone or Skype.

**“...Our tutors go through a rigorous selection process and have the knowledge, experience and commitment to not only help you through your course, but to support you in understanding the subject and developing skills to support your future career”**

John Vaughan, Academic Director

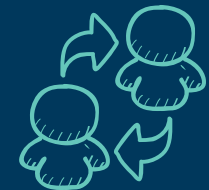
## Student Support

Understanding, approachable and ready to help, our Student Support team at Arden are committed to helping you manage your course. You'll have a personal student support co-ordinator to support you with your course progress, who will be your key contact for things like:

- **Managing your time**
- **Accessing study materials**
- **Submitting your assignment**

**“We're with you every step of the way throughout your learning journey, offering support, guidance and encouragement. Celebrating our students' success at graduation and seeing them take another step toward achieving their dreams is the reason we love what we do.”**

Sian Duffin, Student Support Manager





# WHAT OUR STUDENTS SAY

---

“For a year’s tuition fee at university, I could pay for the whole course with Arden University. Studying part-time has made me into a reputable candidate, as I have been able to gain valuable experience in different work places. The fact that I have chosen to study at home allows me to demonstrate that I am a determined worker who will work hard.”

Ediz Ali, LLB (Hons) QLD

---





---

“Blended learning with Arden is very good, and helps me combine both work and study as I live in Lambeth in south-east London. The course has helped me in my career because it has given me the confidence to take on promotion and change jobs.”

Cemene Wellington, BA (Hons) Healthcare  
Blended Learning

---



## HOW TO APPLY

Interested in applying?

Once you're ready to apply you can make your application in a variety of ways.

ONLINE



DOWNLOAD



CONTACT US



If you want to know a little more, have questions or just want to chat to the team before applying you can contact us:



Visita: [VETE.COM.MX](http://VETE.COM.MX)

Email: [info@vete.com.mx](mailto:info@vete.com.mx)

Teléfonos:

(33) 3614-8383

(33) 3614-1313

800-122-8383

Whatsapp:

332-486-8865



## **VETE EDUCATION & TRAVEL**

**Estamos ubicados en Boulevard Puerta de Hierro #5153 Piso 2 IOS Offices.**

**Zapopan, Jalisco, México.**

**[WWW.VETE.COM.MX](http://WWW.VETE.COM.MX)**

**[info@vete.com.mx](mailto:info@vete.com.mx)**

**Teléfonos:**

**(33) 3614-8383**

**(33) 3614-1313**

**800-122-8383**

**Whatsapp:332-486-8865**

